


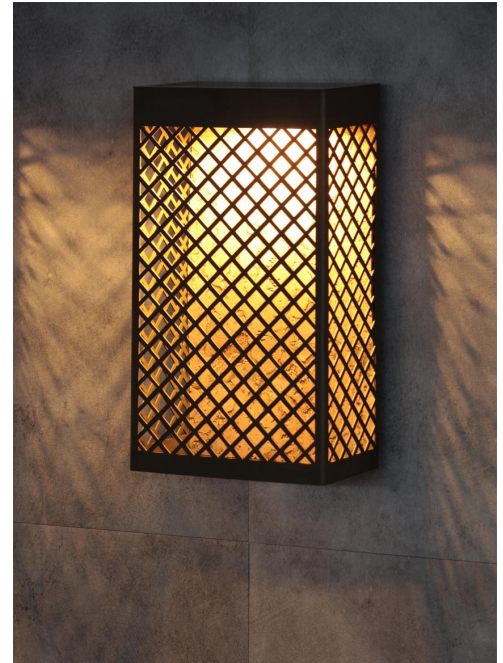


Technical datas

Class	I
Power	LED 4 W
Lumen	400 lm
Led color	2200, 2700 and 3000K
Optics	180°
Resistance to breakage	IK 08
Protection' s degree	IP 65
Weight	3,5 kg
Electric connection	220-240 V

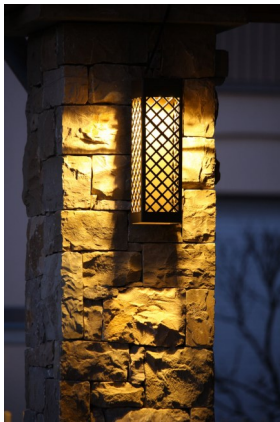
Colors

Inox	IN	
Browntech	BT	
Naturalblack	NB	



Product' s description

Body completely made of stainless steel AISI 316  
Wall fixing  
Opal polycarbonate diffuser



Technical drawing

